

COMMONGROUNDS WORKPLACE

DOWNTOWN DC
1500 K St NW, Suite 200
Washington, DC 20005
29,509 SF





DOWNTOWN DC

CommonGrounds 1500K street coworking space offers an array of upscale restaurants, retailers and museums. Stationed so close to Franklin Square, be sure to bring your lunch with you and enjoy it in the broad tree-shaded park. After work, swing by one of the many local music venues located right off 14th street, they're only a stroll away.

Building Features:

- Historic exterior architecture
- Exposed brick infrastructure and portal windows
- Underground parking with an entrance off I St.
- Elegant design with a touch of modernism

Professional:

- Reception & communal areas
- Fully furnished offices with 48" electronic sit-stand desks and chairs
- Video ready meeting and conference rooms

WorkLife:

- Five-minute walk to Dupont Circle and 14th St. retail corridor
- Onsite fitness center & roof deck patio
- Great selection of upscale restaurants, shopping and entertainment nearby

Office Membership Amenities:

- Fully furnished private offices with 48" electronic sit stand desks, ergonomic office chairs & storage
- Complimentary in-house printing services
- Hand-delivered mail and package service, plus business address
- Salto fob key to access secured workplace areas and office
- Accessible parking locations
- Dual fiber secure, high speed Wi-Fi and ethernet
- Flexible term options from Month-to-Month to 3-year agreements
- Secure IT server infrastructure, private rack space available
- All-inclusive membership rates include taxes, fees and utilities
- Shared kitchen area with pantry, and assorted complimentary beverages
- Video-ready meeting areas and conference rooms

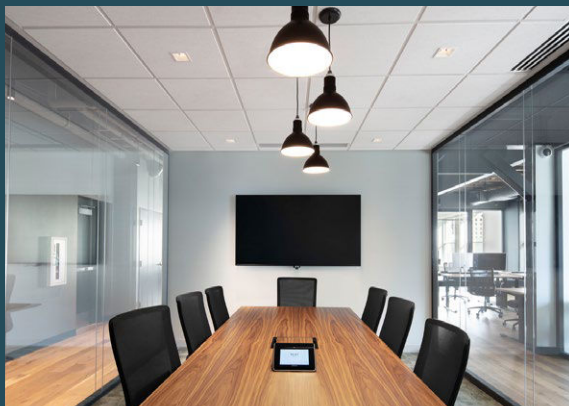


CG+ APP

- Subscribe to a membership plan
- Manage your billing and invoicing
- Make edits to your membership
- Book a conference room
- Message your team
- Explore all CommonGrounds locations
- Register for an upcoming event, speaker or education



1500 K St NW, Suite 200 Washington, DC 20005



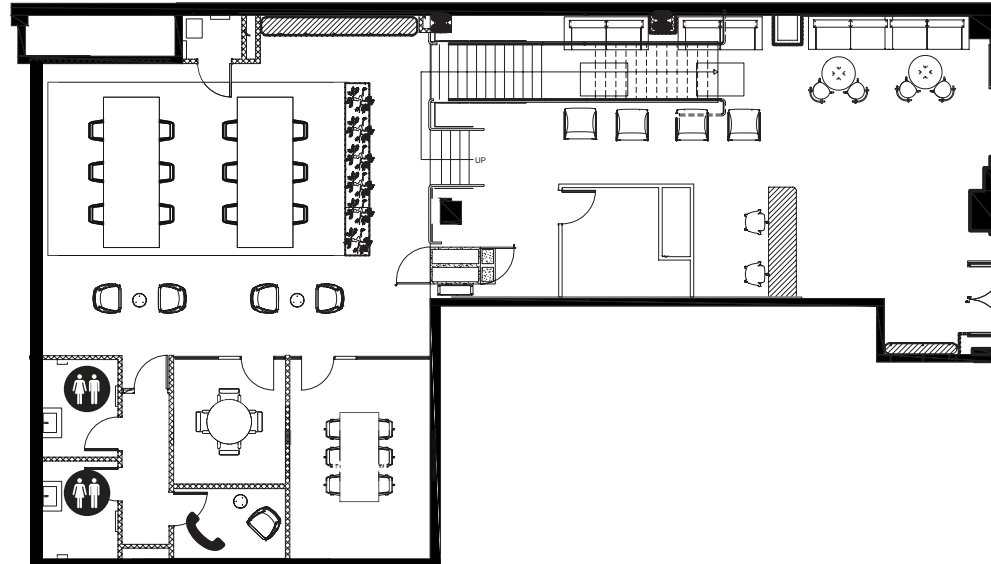
Why CG:

At CommonGrounds, we are leading the evolution of the workplace away from long-term and stagnant to dynamic and sophisticated. We have designed human-centric workplaces in thriving markets with the latest technologies, services and furnishings; while delivering more frictionless environments to drive the twenty-first-century workforce. Keep your culture, lose the confines.

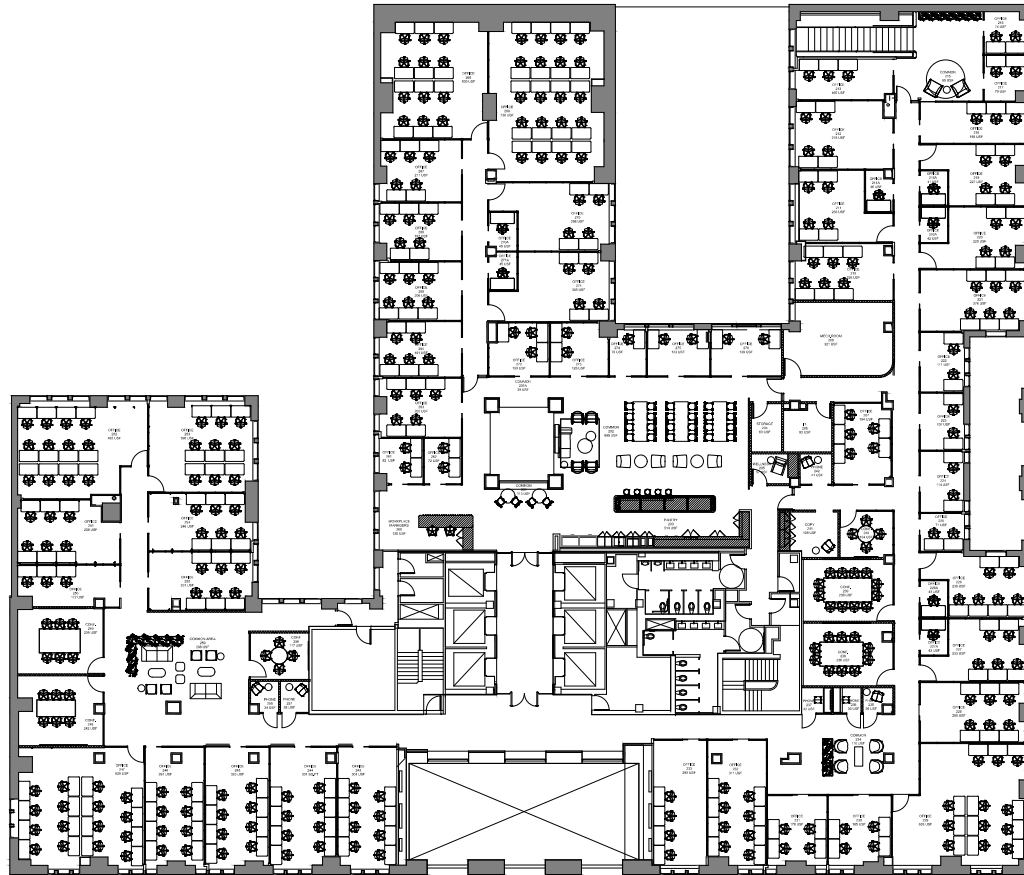
Where you work matters, that's why we believe that work and life need to be in sync for individuals and teams to perform at their best. We strive to design environments that promote productivity and harmony.

We offer Workplace-as-a-Service through:

- Dedicated on-site workplace team to curate relationships through an Activated Ecosystem™
- Hackable Environments™ featuring demountable TECNO wall solutions to meet the ever-shifting spatial demands of our clients
- Functional & frictionless environments
- Workspace designs for maximum productivity through varying Work Typologies™
- Hybrid Mobility™ model to promote collaboration through flexible workspaces
- Salto fob key security
- Dual provider gigabyte fiber lines
- Fortinet Firewall system to ensure maximum network security
- Cisco Meraki Switch cloud network management
- Airmidia AV Technology & Crestron hardware
- Our proprietary CG+ mobile app to streamline worklife
- Headquarters-as-a-Service to help create a dynamic branded workplace for your business



- Ground floor entry with access to 2nd floor
- Private desks (12)
- Private phone booths (1)
- Conference rooms (2)
- Communal seating
- Reception & mail room
- Restrooms



- Private phone booths (6)
- Conference rooms (6)
- Wellness room
- Communal seating
- Shared kitchen & pantry
- Print & scan station
- Restrooms

1500 K St NW, Suite 200 Washington, DC 20005



ENTERPRISE


- 🕒 24/7 full access to entire workplace
- 📋 Pick and choose from different plans as part of your membership
- 🏠 Furnished workspace with access to in-house design team for alternate layouts and fixtures
- 🔧 Perfect for those with growing, customizable needs


EMPOWERED
UNUSUAL
PROFESSIONAL
POWERED
VENUE
YOURSELF

1500 K St NW, Suite 100 Washington, DC 20005

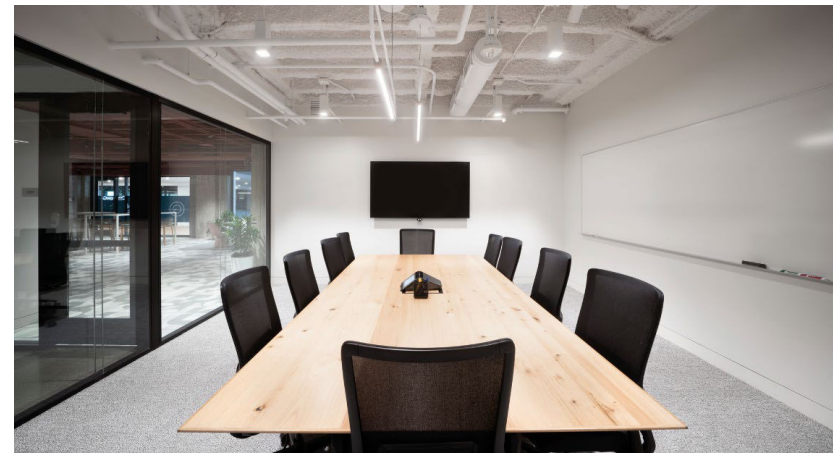
About 1500k:

 Walkable to shops, restaurants and downtown area

 Three blocks north of the White House with proximity to National Mall and monuments

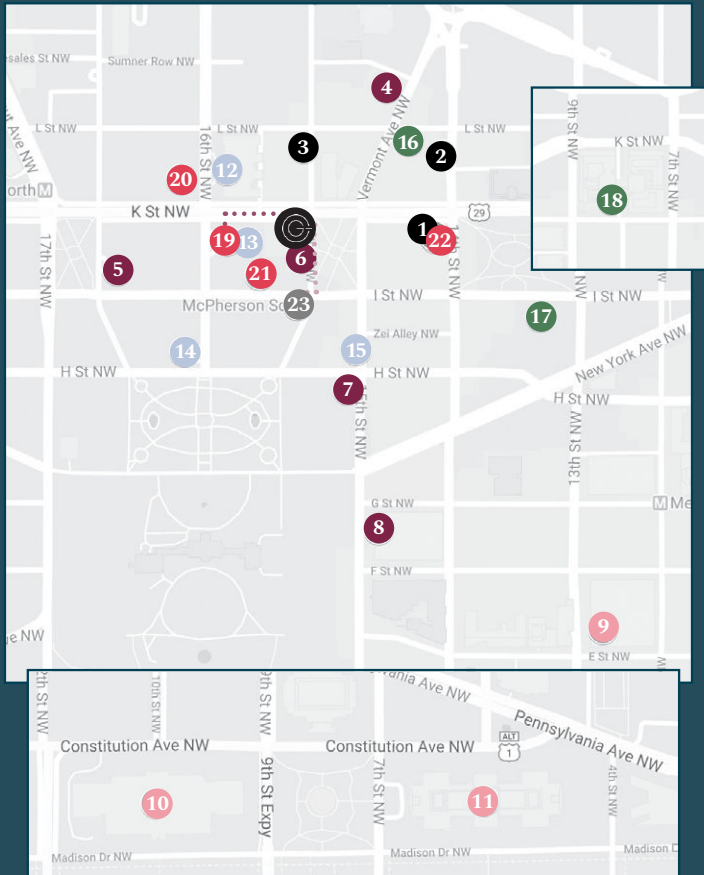
 Roof-top terrace and onsite fitness center

 Five minutes to Dupont Circle and 14th St. retail corridor



Map, parking, transit:

- Capital Bike share stations within three blocks
- Half a block from McPherson Station (Metro Orange, Blue and Silver lines) & two blocks from Farragut North Station (Metro Red line)
- Underground parking
- Minutes to Union Station



Office Support:

- 1. FedEx Office Ship Center**
1400 K St NW Ste 102,
Washington, DC 2000
(202) 898-1401
- 2. United States Postal Service**
1400 L St NW Lobby 2,
Washington, DC 20005
(202) 523-2001
- 3. The UPS Store**
1032 15th St NW,
Washington, DC 2000
(202) 785-3604



Restaurants:

- 4. Lincoln**
1110 Vermont Ave NW,
Washington, DC 20005
(202) 386-9200
- 5. The Army and Navy Club**
901 17th St NW,
Washington, DC 20006
(202) 628-8400
- 6. Georgia Brown's**
950 15th St NW,
Washington, DC 20005
(202) 393-4499
- 7. Joe's Seafood, Stone Crab**
750 15th St NW,
Washington, DC 20005
(202) 489-0140
- 8. Old Ebbitt Grill**
675 15th St NW,
Washington, DC 20005
(202) 347-4800



Local Attractions:

- 9. Warner Theatre**
*Art deco movie palace
now staging performances*
513 13th St NW,
Washington, DC 20004
(202) 783-4000
- 10. Smithsonian Nation
Museum of Natural History**
*Acclaimed museum celebrating
the natural world.*
10th St & Constitution Ave NW,
Washington, DC 20560



Hotels:

- 11. National Gallery of Art**
*Permanent collection holds American
& European works and a sculpture
garden*
Constitution Ave NW,
Washington, DC 20565
(202) 737-4215
- 12. Capital Hilton**
1001 16th St NW,
Washington, DC 20036
(202) 393-1000
- 13. St. Regis**
923 16th And K Streets, N.W.,
Washington, DC 20006
(202) 638-2626
- 14. The Hay Adams**
800 16th St NW,
Washington, DC 20006
(202) 638-6600
- 15. Sofitel**
806 15th St NW,
Washington, DC 20005
20006(202) 730-8800



Car Rentals:

- 16. Enterprise Rent-A-Car**
1029 Vermont Ave NW,
Washington, DC 20005
(202) 393-0900
- 17. Instant Luxury &
Exotic Car Rental**
1300 I St NW Ste 400E,
Washington, DC 20005
(877) 736-8553
- 18. Hertz at the Renaissance Hotel**
999 9th St NW,
Washington, DC 20001
(202) 842-1541



Parking:

- 19. SP+ Parking**
923 16th St NW,
Washington, DC 20006
(202) 347-3000

20. Nation Parking(Valet Service)
1016 16th St NW,
Washington, DC 20036
(202) 664-2323

21. Colonial Parking
1575 I St NW,
Washington, DC 20005
(202) 842-1413

22. Impark Parking
1400 K St NW,
Washington, DC 20005
(202) 999-3586



Public Transit:

23. McPherson Square Station
1400 I St NW,
Washington, DC 20005
(301) 562-5360