



COMMONGROUNDS
WORKPLACE

Salt Lake City ORPHEUM

132 S. STATE STREET
SALT LAKE CITY, UT 84111

In the center of Downtown Salt Lake City, part of the new *Regent* District, CommonGrounds workplace sits in an exquisite historic theater. In the heart of this vibrant neighborhood, our Salt Lake City Orpheum location gives easy access to local area attractions, restaurants, and more.

Building Features:

- Grand lobby entrance
- 20,000 Square feet total
- Attached 5-level covered parking area

Professional:

- Reception & secure delivery
- Fully furnished offices with 60" sit-stand desks and chairs
- Video ready meeting and conference rooms

Worklife:

- In the Central Business District, part of the revitalized theater district
- Steps to the City Creek TRAX station
- Two blocks to Temple Square
- Ski equipment storage and complimentary shuttle to area mountains





COMMON GROUND
WORKPLACE

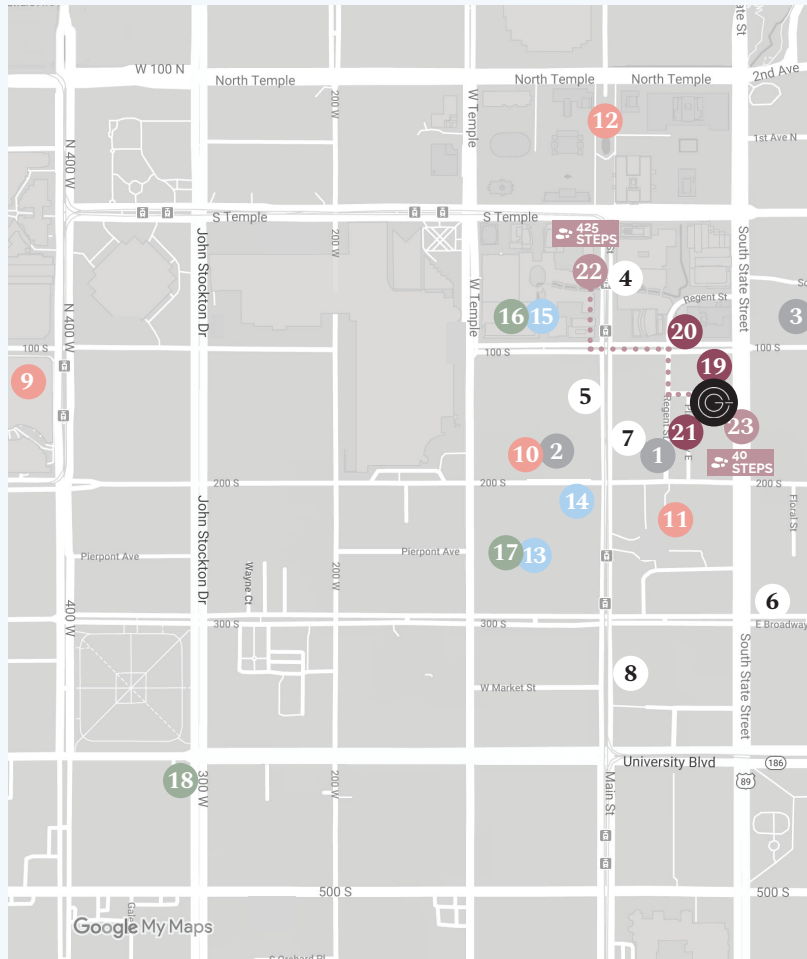
cgworkplace.com

132 S. STATE STREET, SALT LAKE CITY, UT 84111

Salt Lake
City
ORPHEUM

Map, parking, transit:

- One block from City Creek Center mall
- Located at cross streets Regent and State
- GREENbike station nearby
- Walking distance to City Center TRAX station
- Steps from 160 S State St. bus stop
- Direct street access and attached parking garage



Office Support:

1. FedEx Office Print & Ship Center
19 E 200 S, Salt Lake City, UT 84111
(801) 533-9444

2. UPS Store
32 W 200 S, Salt Lake City, UT 84101
(801) 363-7100

3. USPS
135 E 100 S, Salt Lake City, UT 84111
(801) 428-0366



Restaurants:

4. CoreLife Eatery
Healthy casual quick bite options
51 Main St Suite 153, Salt Lake City, UT 84101
(385) 259-0395

5. Beer Hive Pub
Cozy vintage pub
128 Main St, Salt Lake City, UT 84101
(801) 364-4268

6. The Copper Onion
Locally sourced American fare and libations.
111 E Broadway #170, Salt Lake City, UT 84111
(801) 355-3282

7. Eva's Bakery
French pastries, sandwiches, breakfast & lunch
155 Main Street, Salt Lake City, UT 84101
(801) 355-3942

8. The Rest / Bodega
Speakeasy vibe offering eclectic bites and craft cocktails
331 Main Street, Salt Lake City, UT 81111
(801) 532-4042

Local Attractions:

9. Clark Planetarium
110 400 W, Salt Lake City, UT 84101
(385) 468-7827

10. Capitol Theatre
50 W 200 S, Salt Lake City, UT 84101
(801) 355-2787 - arttix.org

11. Gallivan Center
239 Main St, Salt Lake City, UT 84111
(801) 535-6110

12. Temple Square
50 N Temple, Salt Lake City, UT 84150
(801) 531-1000

Hotels:

13. Hilton Salt Lake City Center
255 S W Temple, Salt Lake City, UT 84101
(801) 328-2000

14. Kimpton Hotel Monaco
Salt Lake City
15 W 200 S, Salt Lake City, UT 84101
(801) 595-0000

15. Salt Lake City Marriott
Downtown at City Creek
75 S W Temple, Salt Lake City, UT 84101
(801) 531-0800

Car Rentals:

16. Hertz
75 S W Temple, Salt Lake City, UT 84101
(801) 355-8427

17. Avis
Hilton Hotel, 255 S W Temple,
Salt Lake City, UT 84101
(801) 359-2177

18. Enterprise
404 300 W, Salt Lake City, UT 84101
(801) 534-1888

Parking:

19. Orpheum Office Plaza Garage
70 East Orpheum Ave,
Salt Lake City, UT 84103
(801) 321-8760
ONSITE

20. City Creek East Garage
50 E 100 S, Salt Lake City, UT 84111
(801) 321-8760

21. Regent St Garage Orpheum
Orpheum Ave, Salt Lake City, UT 84111
(801) 321-8700
160 STEPS

Public Transit:

22. City Center TRAX station
55 Main St, Salt Lake City, UT 84101
425 STEPS

23. UTA bus stop
160 S State St, Salt Lake City, UT 84111
40 STEPS



COMMONGROUNDS
WORKPLACE

cgworkplace.com

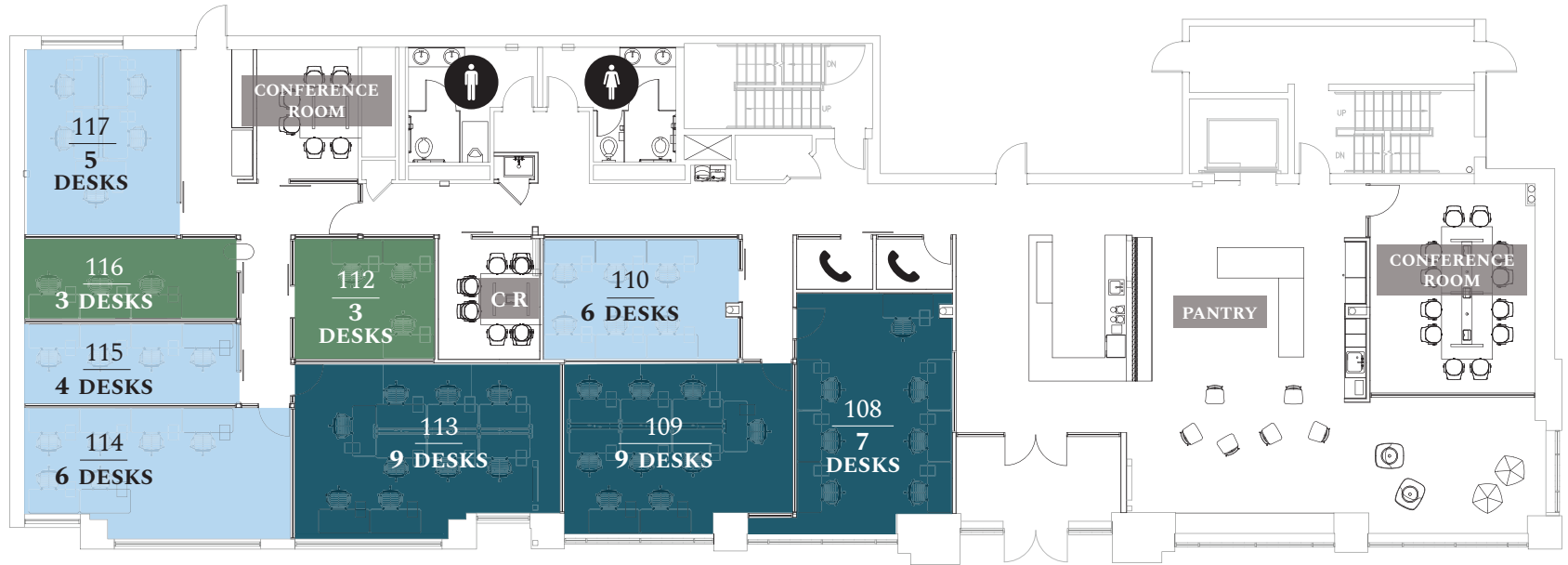
132 S. STATE STREET, SALT LAKE CITY, UT 84111

**Salt Lake
City
ORPHEUM**

Floor Plans:

Floor 1

- Ground floor access
- Private phone booths (2)
- Conference rooms (3)
- Communal seating
- Shared kitchen & pantry
- Print & scan station
- Barista serving complimentary espresso beverages
- Restrooms
- Garage access



SMALL OFFICE
1-3 DESKS

MEDIUM OFFICE
4-6 DESKS

LARGE OFFICE
7-10 DESKS



COMMON GROUNDS
WORKPLACE

cgworkplace.com

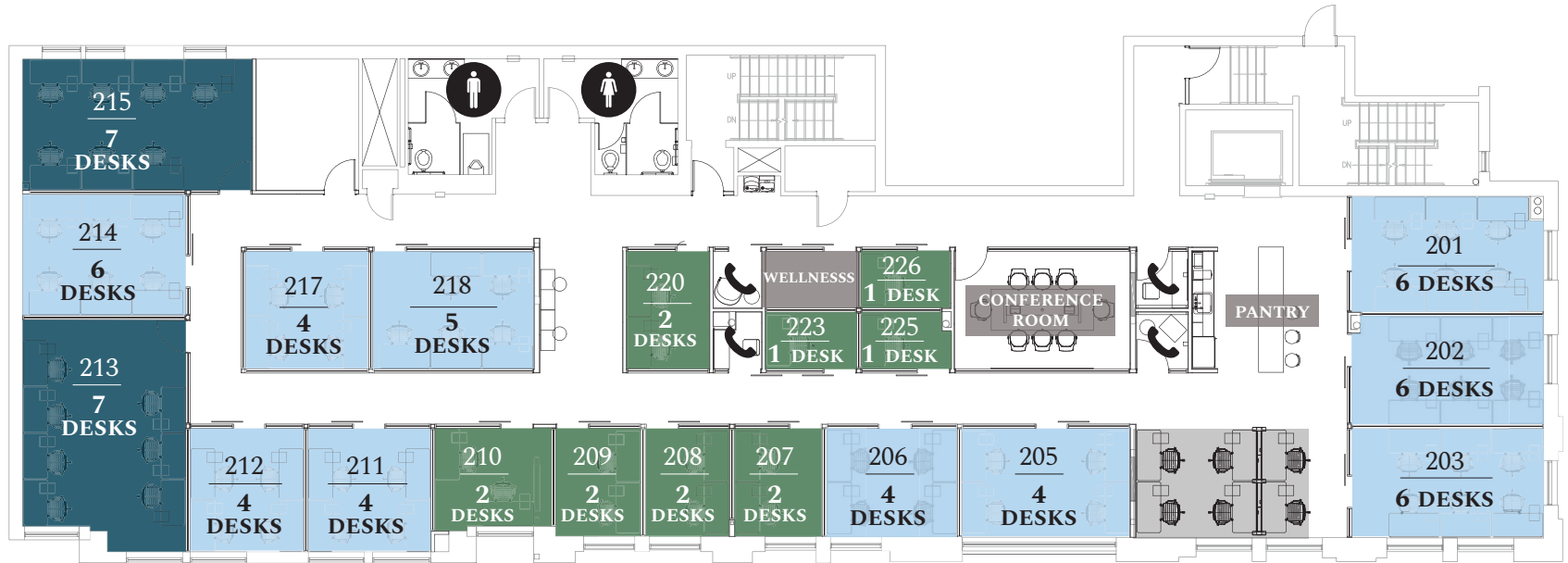
132 S. STATE STREET, SALT LAKE CITY, UT 84111

**Salt Lake
City
ORPHEUM**

Floor Plans:

Floor 2

- Private desks (6)
- Conference rooms (1)
- Wellness room
- Private phone booths (4)
- Shared kitchen & pantry
- Restrooms
- Garage access



	SMALL OFFICE 1-3 DESKS		MEDIUM OFFICE 4-6 DESKS		LARGE OFFICE 7-10 DESKS		PRIVATE DESKS 6 DESKS
---	---------------------------	---	----------------------------	---	----------------------------	---	--------------------------



COMMON GROUNDS
WORKPLACE

cgworkplace.com

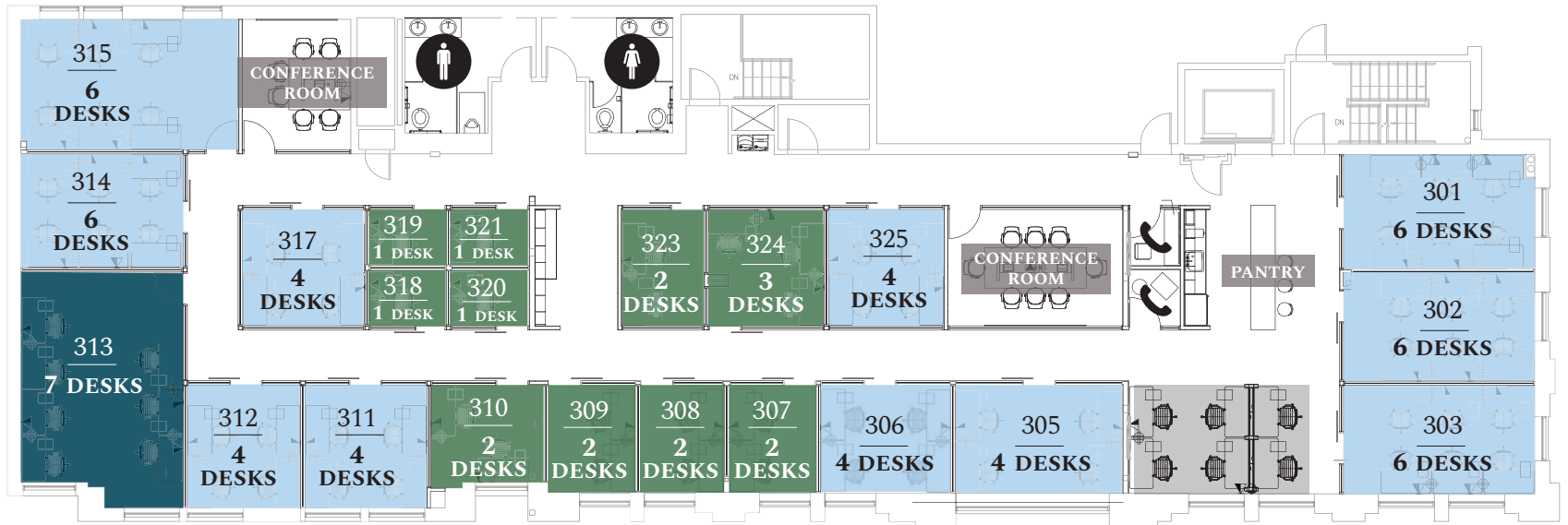
132 S. STATE STREET, SALT LAKE CITY, UT 84111

**Salt Lake
City
ORPHEUM**

Floor Plans:

Floor 3

- Private desks (6)
- Conference Rooms (2)
- Private Phone Booths (2)
- Shared kitchen & pantry
- Print & scan station
- Restrooms
- Garage access



	SMALL OFFICE 1-3 DESKS		MEDIUM OFFICE 4-6 DESKS		LARGE OFFICE 7-10 DESKS		PRIVATE DESKS 6 DESKS
---	---------------------------	---	----------------------------	---	----------------------------	---	--------------------------



COMMON GROUNDS
WORKPLACE

cgworkplace.com

132 S. STATE STREET, SALT LAKE CITY, UT 84111

**Salt Lake
City
ORPHEUM**

Products:

Need flexible space solutions for larger teams? Serving teams of all sizes.

Our in-house design division can help design the space to fit your brand, culture and team's work typology needs.

Communal



- Workday access Monday-Friday 8a-6p
- Access to a wide variety of collaboration and gathering spaces
- Access to soundproof phone rooms
- Conference rooms with credit

Desk



- 24/7 full access to entire workplace
- Access to open seating desks with drawers in secure area
- 60" sit stand desks & 28" flat screen monitors
- Conference rooms with credits

Office



- 24/7 full access to entire workplace
- Private secure workspace areas for entrepreneurs and teams of all sizes
- Furnished workspace with access to in-house design team for alternate layouts and fixtures
- Conference rooms with credits

Enterprise



- 24/7 full access to entire workplace
- Pick and choose from different plans as part of your membership
- Furnished workspace with access to in-house design team for alternate layouts and fixtures
- Perfect for those with growing, customizable needs



COMMONGROUNDS
WORKPLACE

cgworkplace.com

132 S. STATE STREET, SALT LAKE CITY, UT 84111

Salt Lake
City
ORPHEUM

CommonGrounds

Space rental includes enterprise-grade amenities, service and technology

Office Membership

- Fully-furnished private offices with sit-stand desks, ergonomic office chairs & storage areas
- Hackable Environment™ featuring demountable Tecno wall solutions to meet our clients shifting demands
- Salto fob key to access secured workplace areas and office
- Dual Fiber Secure, high speed Wi-Fi and ethernet
- Pantry with free drip coffee and tea
- Video-ready meeting areas and conference rooms
- Generous complimentary in-house printing services
- Hand-delivered mail and package service, plus business address
- Access to all existing and future locations
- Flexible term options from Month-to-Month to 3 year agreements
- All-inclusive membership rates include internet taxes, fees, utilities, and services from a professional workplace staff

CG + APP

- Manage your billing and invoicing
- Make edits to your membership
- Book a conference room
- Message your team
- View local areas of interest
- Explore all CommonGrounds locations
- Post job opportunities for your company
- View and register for an upcoming event, speaker, or education session

Community

- Broad network of CommonGrounds members locally and nationwide
- Events, speakers, learning opportunities, and networking

Technology

- Video-ready conference and meeting rooms fully equipped with both Crestron and Airmidia AV technology
- Fortinet Network Security leverages a single operating system that delivers industry-leading data security effectiveness and unmatched performance
- Cisco Meraki: the leader in cloud controlled WiFi, routing, and security providing scalable enterprise networks
- Dual-provider 1GIG fiber delivering unparalleled Internet speed for downloads, uploads, and streaming from any device
- Professional IT support from CG's internal IT team
- Access to local CG Slack workspace for communication

Our Partners and Providers

